

## Community Assessment



RCDWR conducted an inspection in March 2026, reporting on aesthetics, traffic, odors, signage, drainages, air quality, and other community issues. The inspection report along with photographs are attached.

## LEA Corner

The Mitigation Monitoring and Site Inspection reports for January, February, and March 2026 are attached. A Notice of Violation was issued for site maintenance, including, but not limited to, temperature exceedances in the Gas Collection System and leachate seeps.



## Landfill Tonnage and Traffic



Landfill Totals  
(Daily Average)

2026	Tonnage	Traffic
January	11,527	1,081
February	11,095	1,083
March	11,296	1,114

The average weekly tonnage was tons 67,154 and maximum was 69,810 tons (week of 1/05/26).

## Quarterly Complaint Summary



For details, see complaint logs from the LEA and WM.

	Odor	Site Condition	Other
LEA	0	0	0
WM- El Sobrante	8	0	6

## Next Meeting



The next COC meeting is on June 10, 2026, 10:00 AM.

TV Water District  
Board Room  
22646 Temescal Canyon Rd  
Temescal Valley, CA 92883



## 2025 Annual Reports

- The Draft Annual Reports are being prepared by WM and are estimated to be available by the next COC meeting.

Socialize With Us!



---

# Community Assessment



## El Sobrante Landfill: Community Assessment

Date: March 18 & 25, 2026 Arrival time: 10:00 am Prepared by: Katherine Veliz/Aliah Mitchell/Kinika Hesterly, RCDWR

### I. Aesthetics

- Pond 4 visual inspection:
  - Green park table and bench - good condition (photo 1).
  - Pond 4 gate and fencing - good condition, no litter (photo 2).
  - Pond 4 outside slope - good vegetative cover.
- Drainage channel/culverts:
  - No blockage observed in the drainage channel east or west of the Pond 4 gate.
  - Culvert chipping was observed; no signs of graffiti (photo 2).
- Dawson Canyon Road condition:
  - The dirt section subject to quarterly grading by WM was smooth with even surfaces. The road was graded in the 1<sup>st</sup> quarter on March 18, 2026.
- Berm 10/11:
  - No visible litter, good vegetative cover (photo 3 - Berm 10; photo 4 - Berm 11).
- Landfill operations:
  - Not visible from Dawson Canyon area or Spanish Hills/Trilogy area.
  - No odor in Dawson Canyon area (near Pond 4).
  - No odor in Spanish Hills/Trilogy area.
  - No odor in the Terramor Community.
  - Landfill operations not visible from communities west of I-15 (photos 6 and 7); bare outside slopes; WM implementing plan to address the bare slopes.
  - Landfill operations not visible from the Terramor Community (photo 5).
  - No new noticeable erosion on landfill slopes visible from the communities.
  - No visible off-site litter.
- Signage:
  - Inspected landfill address and directional signs. All signs are in good condition; visible and placed at numerous locations along Dawson Canyon Road

### II. Traffic Mitigation Enforcement:

- 'No Right Turn' on Temescal Canyon Road (TCR) from Dawson Canyon:
  - No violations observed. No illegal right turns made by landfill trucks.
  - 'No Right Turn' signs are fully visible (photo 8), including 3 new neon flashing signs stating 'Right Turn Prohibited For All Landfill Vehicles'.

### III. Miscellaneous

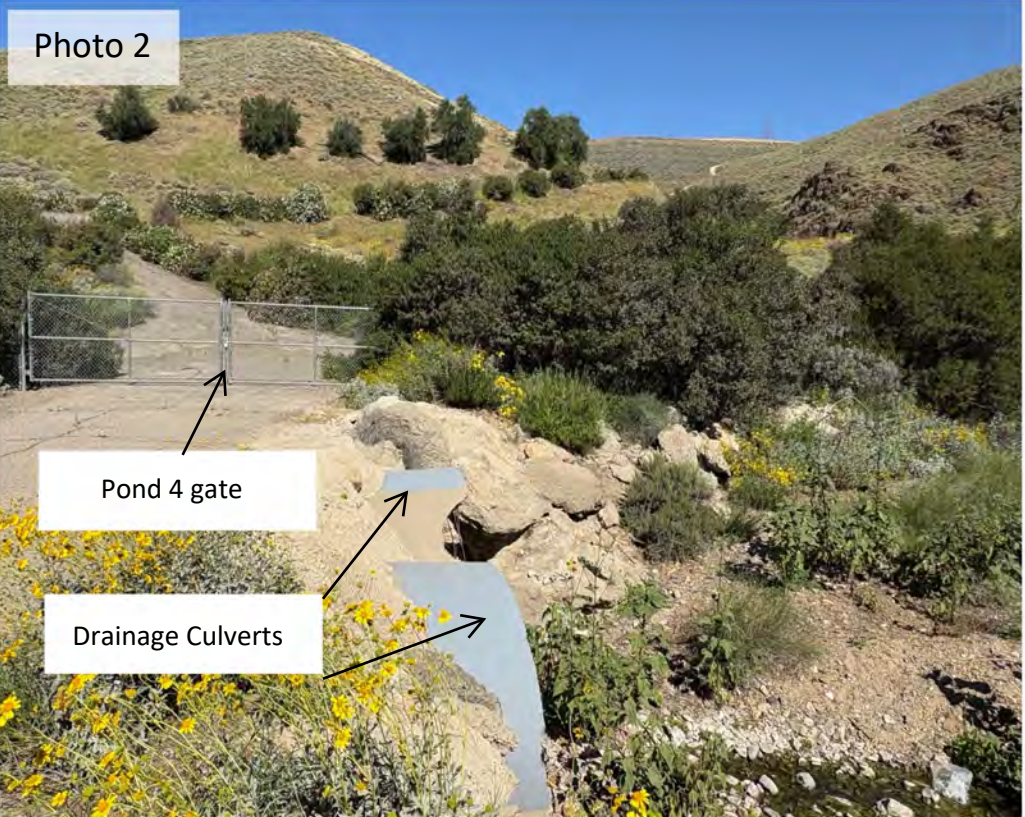
Reviewed 1<sup>st</sup> quarter 2026 site aerial (see attached).

Photo 1



Park Table & Bench

Photo 2



Pond 4 gate

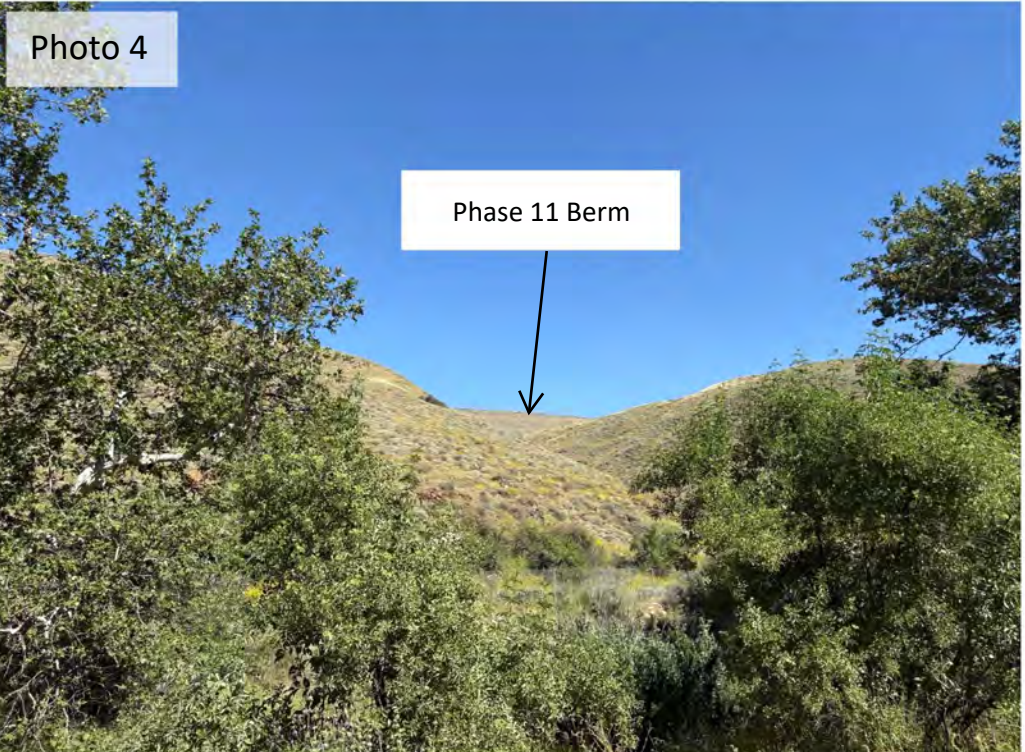
Drainage Culverts

Photo 3



Phase 10 Berm

Photo 4



Phase 11 Berm

Photo 5

Typical View from Terramor Community



Photo 6

Typical View from Trilogy Community West of I-15



Photo 7

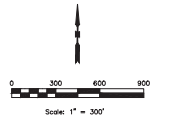
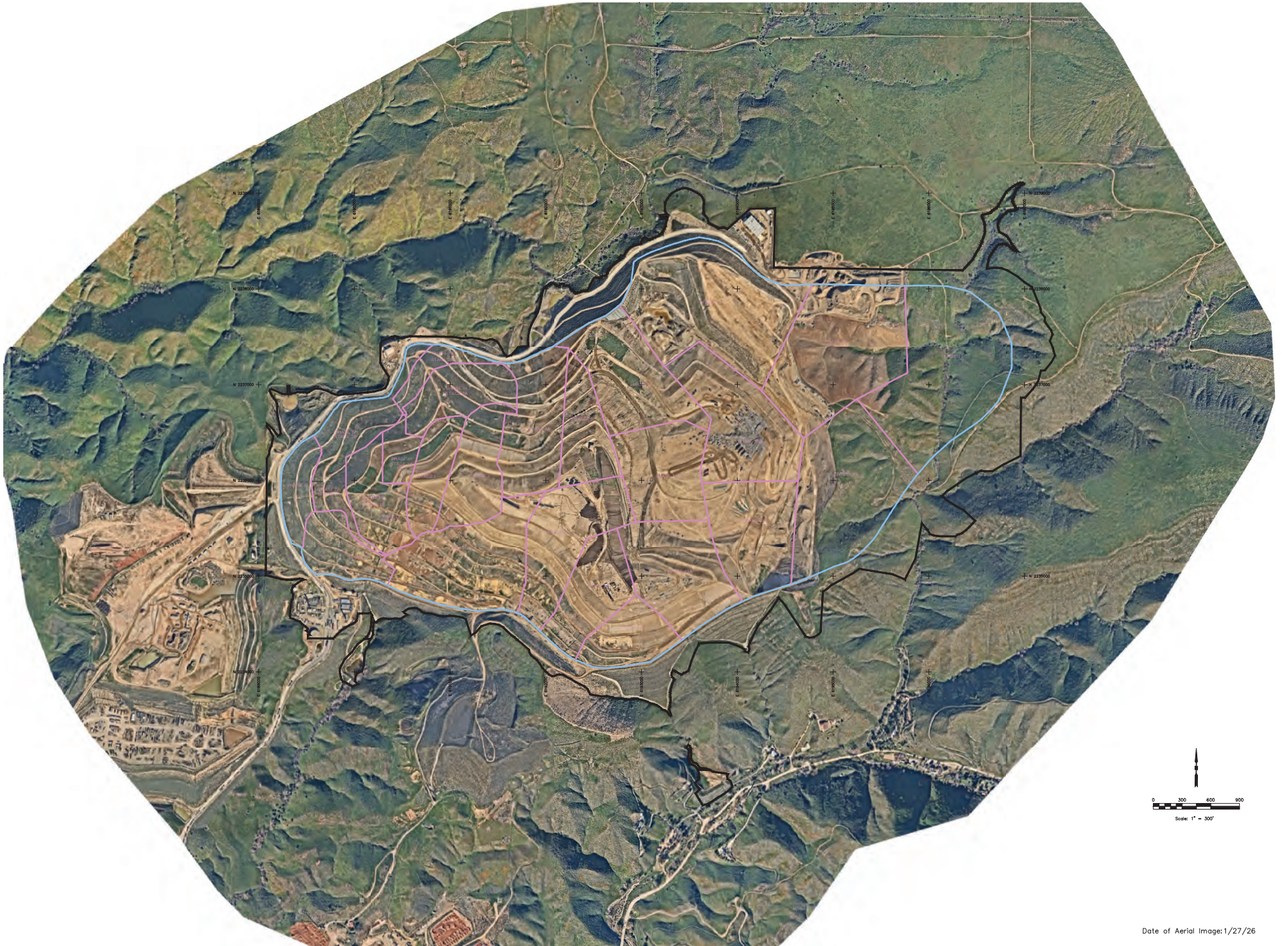
Typical View from Trilogy Community West of I-15



Photo 8

"No Right Turn" Signs





Date of Aerial Image: 1/27/26

---

## El Sobrante Landfill



# El Sobrante Landfill

1<sup>st</sup> Quarter 2026

## El Sobrante Landfill Operations Update:

- Continuing to fill landfill cell 13B on the 6<sup>th</sup> lift.
- Currently running 24 hours and 6 days a week. The landfill is receiving about 12,000 - 13,000 tons per day, which is averaging about 70,000 tons per week.

## Events Update:

WM attended the Spring Fling Easter event at Terramor which had about 200 guests.

El Sobrante landfill hosted a free compost and mulch day at Tom's farms for the Temescal Valley Community. It was a fantastic turnout and most of the material was taken before the end of the day.



1Q2026 DATA SUMMARY OF COMPLAINTS

MONTH	YEAR	TYPE	NUMBER OF COMPLAINTS	DESCRIPTION
January	2026	Odor	1	<p>Dawson Canyon Community registered an odor concern on 1/13.</p> <p>No unusual/odorous loads disposed at the landfill. The landfill team conducted perimeter checks and no unusual odor detected offsite at the time of inspection. The odor neutralizer system was on during the complaint and the gas collection and control system was working properly.</p>
February	2026	Odor	2	<p>Dawson Canyon Community registered odor concerns on 2/23 and 2/24.</p> <p>No unusual/odorous loads disposed at the landfill. The landfill team conducted perimeter checks and no unusual odor detected offsite at the time of inspection. The odor neutralizer system was on during the complaints and the gas collection and control system was working properly.</p>
		Traffic	3	<p>WM was notified via text on 2/05, 2/18, and 2/25 that a member of the Retreat community had reported a traffic concern.</p> <p>WM immediately followed up with the resident.</p>
March	2026	Odor	5	<p>Terramor Community registered odor concerns on 3/2, 3/10, 3/24, and 3/30.</p> <p>No unusual/odorous loads disposed at the landfill. The landfill team conducted perimeter checks and no unusual odor detected offsite at the time of inspection. The odor neutralizer system was on during the complaints and the gas collection and control system was working properly.</p>
		Traffic	3	<p>WM was notified via text on 3/10, 3/11, and 3/13 that a member of the Retreat community had reported a traffic concern.</p> <p>WM immediately followed up with the resident.</p>

---

LEA Mitigation Report

Monthly Inspection Reports



# COUNTY OF RIVERSIDE

## DEPARTMENT OF ENVIRONMENTAL HEALTH

### El Sobrante Landfill Quarterly Mitigation Monitoring Report

**Date:** 5-5-26

**Completed by:** Bonnesa Lopez

**Quarterly Report Covering:** January – March 2026

#### Findings

#### Inspections (A-5)(A-6)(A-7)(AQ-2)(G-11)(G-12)(G-24)(N-1)(N-7)(U-7)(U-8)(U-9)(U-10)(W-1)(W-5)

- Three unannounced routine inspections were conducted over this past quarter:
  - January 22<sup>nd</sup>
    - **Violation: 27 CCR 20750 Site Maintenance.** The LEA received 24-hour notifications that wells 12/02/25, 12/09/25, 12/10/25, 12/16/25, 12/22/25, 12/24/25, and 12/29/25 were observed at temperatures greater than or equal to 170 degrees Fahrenheit (°F) and carbon monoxide (CO) concentrations greater than or equal to 1,000 parts per million by volume (ppmv) within Phase 8. Notifications were also sent to the Air Quality Management District (SCAQMD). A pressurized release occurred on 12/5/2025 in Phase 8 of the SET area. Notifications for leachates spills occurred on 12/10/25, and 12/12/25 both in Phase 4. A smoldering event occurred on 12/10/25 in Phase 13B and on 12/31/2025 in Phase 6. A condensate leak occurred at the J-trap in Phase 12 near horizontal gas well 2005B on 12/12/25. A leachate seep that occurred East of Phase 8 LCRS [Leachate Collection and Removal System] on 12/16/25. Another leachate seep occurred near Phase 9 LCRS and extraction well EW2503 on 12/25/25. The LEA received notifications on lab results revealing elevated levels of Dimethyl Sulfide from samples taken on 12/3/25 and 12/29/25 which were later returned to baseline levels. The LEA received a breakdown report for the breakdown of the Gas Collection System (GCCS) for a shutdown which occurred 12/31/25. The LEA observed darkened stains on multiple wells and on the ground in various areas at the time of inspection.
  - February 24<sup>th</sup>
    - **Violation: 27 CCR 20750 Site Maintenance.** The LEA received 24-hour notifications that wells on 1/06/26, 1/13/26, and 1/27/26, were observed at temperatures greater than or equal to 170 degrees Fahrenheit (°F) and carbon monoxide (CO) concentrations greater than or equal to 1,000 parts per million by volume (ppmv). Notifications were also sent to the Air Quality Management District (SCAQMD). The LEA received notifications for leachate seeps which occurred in Phase 8 on 1/06/26, near Phase 9 LCRS on 1/16/26, and near well EW1557D on 1/30/26. The LEA received a notification for a breakdown of the GCCS System that

occurred on 1/10/26 due to electrical difficulties. The LEA received notification for the shutdown of the green waste odor neutralizer system on 1/20/26. The odor neutralizer system was restored on 1/26/26. The LEA received notification for the shut down of the main fence line odor neutralizer system on 1/27/26 and was later restored the same day. Darkened well flex hoses and staining were observed in several areas. Observed an unlidded bucket with dark liquid by well EW2469 where operator stated a recent cleanup of leachate occurred.

- March 24<sup>th</sup>
  - **Violation: 27 CCR 20750 Site Maintenance.** The LEA received 24-hour notifications that wells on 2/05/26, 2/10/26, 2/15/26 and 2/24/26, were observed at temperatures greater than or equal to 170 degrees Fahrenheit (°F) and carbon monoxide (CO) concentrations greater than or equal to 1,000 parts per million by volume (ppmv). The LEA received a notification for a leachate spill which occurred from well EW2469 on 2/4/26 due to valve failure. The valve was replaced on 2/5/26. The LEA received notification for a leachate spill that occurred on 2/23/26 due to a flange failure. The wellhead was replaced on 2/23/26. As a result, the LEA received a completed South Coast Air Quality Management District Form 500-N for the malfunction of extraction gas well EW1554D. The LEA received notification for a smolder near gas well EW2583 in Phase 11B that occurred on 2/27/26. The LEA received a notification for a leachate spill which occurred east of Phase 9 Leachate Collection and Removal System on 2/28/26 due to site maintenance work. LEA observed darkened flex hoses, caving-in donut reducers, staining and dark liquid accumulation on multiple wells. The LEA also observed improper gaskets in a couple of wells and well EW2109 to be partially buried.
- An unannounced inspection of the cover system was completed on March 2<sup>nd</sup>.
  - Area of Concern: 27 CCR Section 20690 Alternative Daily Cover. The LEA observed areas throughout the working face to have exposed waste and tears exposing waste on top of the alternative daily cover.

#### **PM<sub>10</sub> Monitoring (AQ-3)(AQ-4)(AQ-11)**

- No violations noted regarding PM10 monitoring.
- Water trucks are being used for dust control. Odor neutralizing solution added to water trucks for odor mitigation.

#### **Out of County Transfer Station Inspections (T-2) (T-7)**

- No Out-of-County Transfer Station inspections were conducted during this past quarter.

#### **Landfill Gas Monitoring (AQ-1) (W-9) (W-10) (W-11)**

- No violations or Areas of Concern documented this quarter.

#### **Quarterly Aerial (A-2)**

- An updated aerial was taken on January 27, 2026, and showed no areas of offsite grading or operations.



Disposal Facility (Site) Inspection Report (52)  
El Sobrante Landfill (33-AA-0217)  
1/22/2026

recognized in Title 40 Code of Federal Regulations (CFR) section 63.1981(k).

On 12/6/25 the LEA received a notification for a pressurized release that occurred in Phase 8 on 12/5/25. The written report provided by the operator stated, "On December 5, 2025, at approximately 5:51 PM, a pressure release occurred in Phase 8 of the El Sobrante Landfill during construction of the new gas well EW2509 in the subsurface elevated temperature (SET) area. The brief [temperature induced] pressurized release was consistent with a short-duration geyser that subsided within approximately 10 minutes, with an observed discharge reaching an estimated height of up to 50 feet. Leachate discharged onto the drilling bench, with a small amount reaching the adjacent slopes. The affected area was approximately 100 feet x 20 feet. The liquid volume was insufficient for sampling; therefore, soil samples were collected for waste characterization. All liquids remained fully contained within the lined landfill cell and did not enter any v-ditches, storm drain inlets, or other offsite conveyance structures. Construction of the gas well EW2509 was completed on December 5, 2025. Soil samples were collected on December 8, 2025." The report stated, "On December 6, 2025, the impacted soil (approximately 25 cubic yards) was excavated and placed on plastic sheets at the top deck (pending laboratory results). Clean cover soil (processed material that meets specification) was added, and the area was regraded. The site will continue to monitor the area. In response to this occurrence, the wellhead will be installed prior to gravel backfilling for new gas well construction."

On 12/11/25 the LEA received a notification for a leachate spill which occurred in Phase 4 Stage 1 on 12/10/25. The written report provided by the operator stated, "The spill resulted from a leachate line near gas extraction well EW2385 being inadvertently struck by an operator performing work in the subsurface elevated temperature area. The nearby valve was shut off and all liquids remained fully contained within the lined landfill cell. The liquid was insufficient for sampling; therefore, soil samples were collected for waste characterization. No liquids entered any v-ditches, storm drains, or other offsite conveyances. Soil samples were collected on December 11, 2025. On December 10, 2025, approximately 5 cubic yards of impacted soil were excavated and placed on plastic sheeting at the top deck (pending laboratory results). Clean cover soil (processed material meeting specifications) was then placed, compacted, and the area regraded. The leachate force main line was repaired the following day, on December 11, 2025."

On 12/11/25 the LEA received a notification for a smoldering event which occurred in Phase 13A near well EW2474 on 12/10/25. The written notification provided by the operator stated, "On December 10, 2025, at approximately 11:04 AM, minor smoldering was observed in Phase 13A near well EW2474. A follow-up inspection today confirmed no further signs of smoldering. The gas well EW2474 recorded a carbon monoxide (CO) level of 300 parts per million (ppm) yesterday, which decreased to 50 ppm during today's monitoring. The area was covered with soil, compacted, and regraded. The site will continue to monitor the area to ensure no further issues arise."

On 12/12/25 the LEA received a notification for a condensate leak which occurred at

# Disposal Facility (Site) Inspection Report (52)

El Sobrante Landfill (33-AA-0217)

1/22/2026

the J-trap in Phase 12 near horizontal gas well 2005B on 12/12/25. The written report provided by the operator stated, "Site personnel promptly shut off the nearby valve to stop the leak. The condensate originated from the Fernco connection associated with the vacuum lateral serving well 2005B. The condensate contacted stormwater that was temporarily ponded in Phase 14 of the landfill, which had accumulated as a result of rain events in November. The volume of condensate was insufficient for sampling; therefore, water and soil samples were collected for waste characterization. All liquids remained contained within the landfill property boundaries and did not enter any v-ditches, storm drains, or other offsite conveyances. At the direction of ESL staff, a contractor collected samples of impacted soil on December 15, 2025 and water from the ponded stormwater on December 12, 2025 for laboratory analysis, including for waste characterization." The report stated, "Upon discovering the leak, the nearby valve was promptly shut off to prevent further release. On December 12, 2025, immediate response actions included the use of vacuum trucks, cleanup crews, and equipment to remove approximately 105,000 gallons of water and approximately 250 cubic yards of impacted soil [stored in Phase 9]. The excavated area near the horizontal gas well 2005B was backfilled with clean soil, followed by compaction and regrading. Cleanup activities were completed on December 16, 2025. The 12-inch header at the base of Phase 12 includes two drain points: a J-trap, where the spill occurred, and a second drain that conveys flow to Phase 11. To properly manage condensate in this area, a permanent corrective action will be implemented by abandoning the Phase 11 drain and installing a new drain that will discharge to a new riser in Phase 13B. This work was completed on December 18, 2025."

On 12/12/25 the LEA received a notification for a leachate spill that occurred within Phase 4 Stage 1 on 12/12/25. The written report provided by the operator stated, "The discharge hose from the pump at gas extraction well EW2446D, located within the subsurface elevated temperature area, malfunctioned, resulting in leachate leaking onto the soil and adjacent bench road. The nearby valve was promptly shut off, and all liquids remained fully contained within the lined landfill cell. The affected area was approximately 450 square feet. The volume of liquid was insufficient for sampling; therefore, soil samples were collected for waste characterization. No liquids entered any v-ditches, storm drains, or other offsite conveyances. Soil samples were collected on December 18, 2025." The report stated, "On December 12, 2025, approximately 9 cubic yards of impacted soil were excavated and placed on plastic sheeting at the top deck (pending laboratory results). Clean cover soil (processed material meeting specifications) was then placed, compacted, and the area regraded. Site personnel will continue to closely monitor the area. The discharge hose was replaced and cleanup activities were completed the same day (December 12, 2025)."

On 12/16/25 the LEA received a notification for a leachate seep that occurred East of Phase 8 LCRS [Leachate Collection and Removal System] on 12/16/25. The written report provided by the operator stated, "The affected area is approximately 1 foot by 1 foot. No surface flow or free liquid was observed on the surface; therefore, no liquid entered nearby v-ditches, storm drains, or other offsite conveyances. Soil samples were collected on December 17, 2025." The report stated, "On December 16, 2025,

# Disposal Facility (Site) Inspection Report (52)

El Sobrante Landfill (33-AA-0217)

1/22/2026

following the discovery of the seep, the nearby French drain pump (ELSOT007) associated with Phase 8 LCRS was inspected and found operational, but unable to remove the liquid quickly enough in the area. To support the ongoing dewatering efforts, the French drain QED pump was upgraded to a higher performance unit. The impacted soil (approximately 5 gallons) was removed and stored in a sealed container pending laboratory results. No waste was exposed during the excavation. Clean cover soil (processed material meeting specifications) was then placed, compacted, and the area regraded. Site personnel will continue to closely monitor the area. All corrective measures were completed on the same day, December 16, 2025.”

On 12/25/25 the LEA received a notification for a leachate seep which occurred near Phase 9 LCRS and extraction well EW2503 on 12/25/25. The written report provided by the operator stated, “It is estimated approximately 25 gallons of leachate mixed with stormwater impacted an area of approximately 75 square feet. No leachate entered the nearby v-ditches, storm drains, or other offsite conveyances. The pumps in Phase 9 LCRS and EW2503 were inspected and confirmed to be operating normally. Soil samples from this seep area were collected on December 30, 2025. The analytical results of the soil sampling will be submitted under a separate report. No liquid sample were collected as there was insufficient ponded liquid available for sampling.” The report stated, “Due to the ongoing storm event this week, site personnel constructed a soil berm and covered the area with plastic to prevent and minimize precipitation impacts. All corrective measures were completed on the same day, December 25, 2025.”

On 12/31/25 the LEA received a notification for a smoldering event which occurred in Phase 6 near wells EW4 and EW5 on 12/31/25. The written notification provided by the operator stated, “The nearby gas wells were monitored, and EW4 indicated a CO level of 700 ppm with no elevated temperature. All other surrounding wells showed no issues. EW4 has been temporarily closed and will be reopened once CO levels return to normal. The area was promptly covered with soil, compacted, and regraded. A follow-up inspection later in the day confirmed no additional signs of smoldering. The site team will continue monitoring the area and notify the LEA of any new developments.”

On 12/19/25 the LEA received a submittal of Form 500-N for the Alternative Monitoring Plan (AMP) notifications. On 12/03/25 a sample was collected from the inlet of Flare 3 and lab results received on 12/16/25 showed elevated levels of Dimethyl Sulfide (DMS). A follow-up sample collected on 12/16/25 and received on 12/17/25 confirmed sulfur levels were returning to baseline.

On 01/07/26 the LEA received a submittal of Form 500-N for the Alternative Monitoring Plan (AMP) notifications. On 12/29/25 a sample was collected from the inlet of Flare 3 and lab results received on 12/30/25 showed elevated levels of Dimethyl Sulfide (DMS). A follow-up sample collected on 12/30/25 and received on 12/31/25 confirmed sulfur levels were returning to baseline.

On 12/31/25 the LEA received a submittal of Form 500-N Breakdown Report for the

**Disposal Facility (Site) Inspection Report (52)**  
**El Sobrante Landfill (33-AA-0217)**  
1/22/2026

breakdown of the Gas Collection Control System (GCCS) for a shutdown which occurred for approximately 20 minutes due to a high-level condensate alarm triggered at condensate sump CS-3.

On 12/05/25 the LEA received a notification for the installation of one additional well in the SET Area and a request to SCAQMD for the extension of the after hours and weekend construction approval through 05/30/26.

During this routine monthly inspection, several gas extraction wells in Phases 4, 6, 8, and 9 were observed and are documented below and in the attached photo report.

Observed darkened flex hoses at the following wells:

- EW2509 (Page 11)
- EW2240 (Page 13)
- EW1557D (Page 23)

Observed a caved-in donut reducer at the following wells:

- EW2240 (Page 13)
- EW2103 (Page 14)

Observed a dark liquid staining on the following wells:

- EW2103 (Page 14) (Photo 1, Page 15)
- EW2446S (Photo 1, Page 19)
- Horizontal pipe of the vacuum line of EW2446D (Photo 2, Page 19)

Observed dark stained soil on the ground in the following areas:

- Near EW2103 (Photo 2, Page 15)
- Near EW2446D (Photo 1 & 2, Page 20)
- Underneath horizontal piping at EW1557D (Page 23)
- Along the v-ditch East of Phase 8 LCRS (Page 25)

Based on the above observations and notifications, this site is not in a state of

# Disposal Facility (Site) Inspection Report (52)

El Sobrante Landfill (33-AA-0217)

1/22/2026

reasonable repair. The operator must continue to monitor all aspects of the disposal site and properly implement all necessary corrective measures to maintain the site in a state of reasonable repair. The operator submitted a Report of Facility Information (RFI) amendment on 12/12/25 to add a Site Maintenance Program (SMP) to the Joint Technical Document (JTD), detailing the proposed plan to address the Enhanced Management Area (EMA) and Subsurface Elevated Temperature (SET) area of the landfill. This RFI amendment was rejected on 01/09/26. Provide corrections and RFI resubmittal within 30 days, as per the RFI Rejection letter.

## No Areas of Concern

## Inspection Report Comments

This is a monthly routine inspection conducted with Bonnesa Lopez of the LEA, Alice Nash of the Water Board, and WM employees – Linda Lockhart, Eddie Botello, Kyle Evans, and Rafael Rosales.

This site is an active landfill which operates 24 hours per day, 6 days per week (Monday through Saturday; Closed Sunday).

Ambient weather at the time of this inspection was 59F and cloudy with 3 mph winds.

The following records for the month of December 2025 were reviewed:

1.) **Tonnage:** Records were provided prior to this inspection via email from Riverside County Department of Waste Resources (RCDWR). These records indicated that this landfill did not exceed the weekly permitted limit of 70,000 tons or the daily permitted limit of 16,054 tons. See attached report.

2.) **Load Checks:** Summary reports were provided prior to this inspection via email from RCDWR that indicated that this site performed at least the minimum required amount of load check inspections of 10 per day, three times per week. See attached report.

3.) **Vehicle Traffic:** Records were provided prior to this inspection via email from RCDWR. During this month, the landfill did not exceed the vehicle traffic volume limit of 1,305 vehicles daily. See attached report.

### 4.) **Complaint Log:**

#### ODOR

-12/02/25 at 11:30 AM a complaint was texted to Richard Carpenter with WM from the Terramor community. WM staff responded by conducting a community inspection. And follow up.

# Disposal Facility (Site) Inspection Report (52)

El Sobrante Landfill (33-AA-0217)

1/22/2026

-12/22/25 at 2:11 PM the LEA texted Linda Lockhart with WM that odors were detected in the Dawson Canyon neighborhood. Disposition of complaint investigation by the operator stated that no discernible odors were detected during the time of inspection, and no unusual/odorous loads were disposed of at the landfill.

## 5.) Special Occurrences:

-On 12/05/25 at approximately 5:51 PM, a temperature induced pressure release occurred in Phase 8 during construction of the new well EW2509 in the subsurface elevated temperature area.

-On 12/10/25 at approximately 9:52 AM, a hot load was delivered at the site. A WM truck was hauling municipal solid waste (MSW) and escorted by the Fire Department. The load was discharged onto the ground in a designated area of the working face (Phase 13B) and dirt was applied immediately. The area was under observation overnight. The Fire Department inspected the WM truck and confirmed there were no hot spots in the compartment. There were no injuries and no property damage to the landfill equipment and the WM truck from this incident.

-On 12/10/25 at approximately 11:04 AM, a minor smoldering was observed in Phase 13A near well EW2474.

-On 12/10/25 at approximately 2:04 PM, a minor leachate spill occurred in Phase 4 Stage 1 of the landfill. The spill resulted from a leachate line near gas extraction well EW2385 being inadvertently struck by an operator performing work in the subsurface elevated temperature area.

-On 12/12/25 at approximately 7:11 AM, a minor leachate spill occurred in Phase 4 Stage 1 of the landfill. The discharge hose from the pump at gas extraction well EW2446D, located within the subsurface temperature area, malfunctioned, resulting in a release of leachate onto the soil and adjacent bench road.

- On 12/12/25 at approximately 9:11 AM, a condensate leak was identified from a J-Trap in Phase 12 near the horizontal gas well 2005B.

- On 12/16/25 at approximately 6:56 AM, a minor leachate seep which resulted in localized soil staining was observed in the area east of Phase 8 LCRS and is not within the subsurface elevated temperature or enhanced management areas. The affected area was approximately 1 foot by 1 foot.

- On 12/25/25 at approximately 7:45 AM, a minor leachate seep was observed at the landfill following a major storm event. The seep is located near Phase 9 LCRS and extraction well EW2503 and is not within the subsurface elevated temperature or enhanced management areas. The affected area was approximately 75 square feet.

# Disposal Facility (Site) Inspection Report (52)

El Sobrante Landfill (33-AA-0217)

1/22/2026

- On 12/31/25 at approximately 9:22 AM, a minor smoldering was observed in Phase 5 near wells EW4 and EW5. A follow-up inspection later in the day confirmed no additional signs of smoldering.

-Site visits were also documented in the special occurrences log from various regulatory agencies on 12/02/25, 12/04/25, 12/16/25, and 12/22/25.

6.) **Employee Training:** Topics included: Slips, Trips, and Falls, ECAP: Prohibited and Special Waste, Disposal Critical 9 Rules, and Rule Book Review with Post Collection Test. Employee attendance logs for the training sessions were observed.

## Overall Site Observations:

Required signage was observed at the front entrance and scale house. The main entrance and scale house were observed to be well-maintained and mostly free of windblown litter. Flare 3 and 4 were both observed to be online. Flare 5 was installed but not yet in operation. At the time of the visit, Flare 5 was being prepared to go online later that day. Temporary leachate tanks were still present. Two gold tanks estimated to hold about 160,000 gallons of leachate each and seven double-walled gray tanks estimated to hold about 20,000 gallons of leachate each were present but not yet in operation. Operators stated that the liquid treatment system was currently in a testing phase and the tested liquid continues to be hauled offsite. One more 160,000-gallon tank is set to be installed but was not observed at the time of the inspection. Multiple liquid waste trucks were observed on-site, reportedly to haul leachate. Currently, leachate is reportedly taken offsite to facilities in Mecca, California and Nevada.

At the green waste pad, the temperature of the green waste piles was taken and found to be 76.8-95F. Material on the green waste pad comes from WM route trucks collecting residential curbside green waste servicing Corona, the city of Riverside, and unincorporated areas of Riverside County. This area is designated for chipping and grinding, however, no chipping and grinding activities are being performed currently. No grinder was observed onsite. All green material deposited on this pad are loaded into transfer trucks and sent out of state for processing. Piles of different types of rock material were observed stockpiled behind the green waste pad. The mister system to control odors was not in operation in this area at the time of the inspection but was observed to be in operation at the other portions of the landfill.

The active face was inspected and landfill tipper machines, known as tippers, commercial trucks, and self-haul customers performing hand-unloads were utilizing the upper entrance on the top level of the cell. Tippers, commercial trucks, and trucks with walking floor trailers remained at the top level to unload, while hand unloads were directed to the lower-right portion of the active face to unload. Hand unloads were directed to exit from the lower entrance, while all other vehicles exited through the upper entrance. Cones and traffic control attendants were present and directing customers on where to go to unload waste. Signs were present to direct traffic. Backup alarms and safety lights were observed in use on heavy equipment vehicles and loaders.

During this inspection, gas wells in Phases 4, 6, 8, and 9 were observed. Multiple wells visited

# Disposal Facility (Site) Inspection Report (52)

El Sobrante Landfill (33-AA-0217)

1/22/2026

were wells with temperatures that have been documented to exceed 170F (per the high temperature notifications discussed previously in the site maintenance violation section of this inspection report). Note: Phase 4,6,8, and 9 are closed areas with an installed final cover. The final cover on any area of an active landfill shall be maintained to comply with the CIWMB criteria for closure and post-closure maintenance specified in 27 CCR, Division 2, Subdivision 1, Chapter 3, Subchapter 5. Specifically, the final cover shall function to protect public health and safety by controlling at a minimum, fires and odors [27 CCR 21140(a)], and the LEA may require modifications to the final cover to control fires and allow access to all areas for inspection and monitoring [27 CCR 21140 (c)(1) and (c)(3)]. In addition, any areas in which final cover is placed prior to the closure of the entire landfill, shall be maintained in accordance with the approved post-closure maintenance plan.

WM employees were observed wearing personal protective equipment (PPE) consisting of hard hats, safety vests, and what appeared to be steel-toed boots. The falconer was observed on-site at this inspection. The universal waste, scrap metal/appliances area, recycle pad, and tire storage containers located next to the green waste pad were all observed to be well maintained and mostly free of windblown litter. Following the landfill inspection, off-site inspections were conducted in the Spanish Hills, Dawson Canyon, and Terramor communities. No odors, windblown litter, or other nuisance conditions were detected in these areas. Monitoring of these locations will continue during future inspections.

If you have any questions regarding this inspection report, please contact the LEA at (951) 955-8980 or email [LEA@rivco.org](mailto:LEA@rivco.org).

## Attachments

El Sobrante Landfill - Load Checks  
El Sobrante Landfill - Photo Report  
El Sobrante Landfill - Tonnage



# Disposal Facility (Site) Inspection Report (52)

El Sobrante Landfill (33-AA-0217)

2/24/2026

monoxide (CO) concentrations greater than or equal to 1,000 parts per million by volume (ppmv) which are the higher operational values recognized in Title 40 Code of Federal Regulations (CFR) section 63.1981(k).

On 01/07/26 the LEA received a notification for a leachate seep that occurred East of Phase 8 LCRS (Leachate Collection and Removal System) on 01/06/26. This is the same location as the seep which occurred on 12/16/25, not 12/23/26 as stated in the operator's original written report. This was clarified in an email received from the operator on 3/4/26. The written report provided by the operator stated, "On January 6, 2026, at approximately 9:15 AM, a minor leachate seep was observed at the El Sobrante Landfill in the same location referenced in the attached December 23, 2025, 7-day report to the Water Board. The seep resulted in localized soil staining, including a very small portion reaching the nearby v-ditch. The seep is located east of Phase 8 LCRS and outside the subsurface elevated temperature and enhanced management areas. No liquids entered storm drains or migrated offsite. Similar to the December 23rd event [12/16/25 seep], the affected area is approximately 1 foot by 1 foot. The nearby French drain pump (ELSOT007) associated with Phase 8 LCRS was inspected and confirmed to be operating normally. Additionally, site personnel constructed soil berms as a preventive measure to contain any potential liquid migration. Affected soil was removed and clean cover soil (processed material meeting specifications) was placed over the area, compacted, and the area regraded. The v-ditch was cleaned. Site personnel will continue to monitor the area. Soil samples from this seep area were collected on Friday, January 9, 2026; the analytical results of the soil sampling will be submitted under a separate report. No liquid samples were collected as there was insufficient ponded liquid available for sampling." The report stated, "Site personnel constructed a soil berm to contain the seep liquid and prevent the liquid from migrating away from the area; please see the photographs included with this report. The corrective measures were completed on the same day, January 6, 2026. Site staff will continue to closely monitor the area."

On 01/17/26 the LEA received a notification for a leachate seep that occurred near the Phase 9 LCRS on 01/16/26. The written report provided by the operator stated, "On January 16, 2026, at approximately 4:17 PM, a minor leachate seep was observed at the El Sobrante Landfill in the same area identified in the December 30, 2025 7-day report to the Water Board. The seep resulted in localized soil staining, with a small portion reaching the adjacent v-ditch (approximately 25 gallons). The seep is located near the Phase 9 LCRS and is outside the subsurface elevated temperature and enhanced management areas. No liquids entered storm drains or migrated offsite. Soil samples will be collected and submitted under a separate report." The report stated, "Following the discovery of the seep, site personnel constructed additional soil berms to contain the liquid within the v-ditch, preventing its migration from the area. The nearby gas well liquid pumps were inspected and confirmed to be operating normally. Further investigation determined that the seep resulted from a malfunction of the Phase 9 LCRS pump, which caused liquids to back up in the leachate riser and obstruct proper drainage from the French drain. The wye-strainer was cleaned to remove the clog, and soil was added and compacted in the affected area. Corrective

Disposal Facility (Site) Inspection Report (52)  
El Sobrante Landfill (33-AA-0217)  
2/24/2026

measures were completed on January 17, 2026. Site staff will continue to closely monitor the area. In a continuing effort to prevent future seeps in the area, the French drain will be extended and a liner flap added to improve liquid collection. This work will be completed by March 31, 2026.”

On 01/30/26 the LEA received a notification for a leachate seep that occurred near well EW1557D on 01/30/26. This is the same location as the leachate spill that occurred on 11/18/25. The written report provided by the operator stated, “On January 30, 2026, at approximately 10:38 AM, a minor leachate seep was identified near extraction gas well EW1557D within the subsurface elevated temperature (SET) area. The leachate (approximately 30 gallons) infiltrated into the soil, and no surface ponding was observed. The seep migrated approximately 15 feet south of gas well EW1557D, impacting an estimated area of approximately 30 square feet. No liquids entered the storm drains or migrated offsite.” The report stated, “Following the discovery of the seep, site personnel constructed a soil berm to contain the area. The nearby gas well liquid pumps were inspected and confirmed to be operating normally. A French drain will be installed to improve liquid collection in the area. During the excavation, the impacted soil will be removed and placed in a roll off bin or staged on top of plastic for waste characterization. These activities are anticipated to be completed by February 27, 2026. Site staff will continue to monitor the area closely.”

On 01/16/26 the LEA received a completed South Coast Air Quality Management District Form 500-N Breakdown Report for the breakdown of the Gas Collection Control System (GCCS) which occurred on 01/10/26 for approximately 1 day and 11 hours and 01/11/26 for approximately 2 hours and 28 minutes due electrical difficulties at Flare 4 and a high-level condensate alarm triggered at condensate sump CS-3, respectively.

On 01/20/26 the LEA received notification for the shutdown of the green waste odor neutralizer system on 01/20/26. The odor neutralizer system was restored later on 01/26/26.

On 01/28/26 the LEA received notification for the shut down of the main fence line odor neutralizer system on 01/27/26. The odor neutralizer system was later restored the same day.

During this routine monthly inspection, several gas extraction wells in Phases 3, 4, 8, 9, 10, and 11 were observed and are documented below and in the attached photo report.

Observed darkened flex hoses at the following wells:

- EW2444 (Page 6, Photo 1)
  
- EW1554D (Page 9)

Disposal Facility (Site) Inspection Report (52)  
El Sobrante Landfill (33-AA-0217)  
2/24/2026

- EW2445 (Page 11)
- EW2386 (Page 12)
- EW2446D & EW2446S (Page 14)
- EW1557D (Page 18)

Observed a caving-in donut reducer at the following well:

- EW2385 (Page 21)

Observed a dark liquid staining on the following wells:

- EW2444 (Page 6, Photo 2)
- EW2446S (Page 15, Photo 1)
- Horizontal pipe of the vacuum line of EW2446D (Page 15, Photo 2)

Observed dark stained soil on the ground in the following areas:

- Near Phase 9 LCRS (Page 3)
- Near EW2444 (Page 7, Photo 1 & 2)
- Near EW2445 (Page 11)
- Near EW2446D (Page 16)
- Near EW1557D (Page 18)

Observed a deteriorated gasket on the following wells:

- EW2446D (Page 15, Photo 1)

Observed an unlidded and unlabeled white-colored 5-gallon bucket less than ¼ full of dark liquid located adjacent to the basket strainer, a pressure relief tote (approximately 200 gallons in size and 1/5 full), and two blue 55-gallon drums stored East of well EW2469 where a leachate spill caused by a pressure relief valve failure occurred on 02/04/26. Operators stated the bucket was used in the cleanup of the recent leachate spill. Upon inquiry, on-site personnel reported that the basket strainer portion of the LCRS is attached to a pressure relief tote and is used to collect excess moisture. The pressure relief tote was also attached to two blue 55-gallon drums which are reportedly

# Disposal Facility (Site) Inspection Report (52)

El Sobrante Landfill (33-AA-0217)

2/24/2026

filled with granular activated carbon and are used to filter and remove any vapors present. Refer to photo report pages 23-26.

Based on the above observations and notifications, this site is not in a state of reasonable repair. The operator must continue to monitor all aspects of the disposal site and properly implement all necessary corrective measures to maintain the site in a state of reasonable repair. The operator submitted a Report of Facility Information (RFI) amendment on 12/12/25 to add a Site Maintenance Program (SMP) to the Joint Technical Document (JTD), detailing the proposed plan to address the Enhanced Management Area (EMA) and Subsurface Elevated Temperature (SET) area of the landfill. This RFI amendment was rejected on 01/09/26. The RFI resubmittal was received by the LEA on 02/13/26 and is currently under review.

## No Areas of Concern

## Inspection Report Comments

This is a monthly routine inspection conducted with Bonnesa Lopez, Fritzy Devera, and Miranda Ramirez of the LEA, and Waste Management (WM) employees – Eddie Botello, Walter Maldonado, Cierra Heyer, and Jose Mendoza.

This site is an active landfill which operates 24 hours per day, 6 days per week (Monday through Saturday; Closed Sunday).

Ambient weather at the time of this inspection was 70F and partly cloudy with 2 mph winds.

The following records for the month of January 2026 were reviewed:

1.) **Tonnage:** Records were provided prior to this inspection via email from Riverside County Department of Waste Resources (RCDWR). These records indicated that this landfill did not exceed the weekly permitted limit of 70,000 tons or the daily permitted limit of 16,054 tons. See attached report.

2.) **Load Checks:** Summary reports were provided prior to this inspection via email from RCDWR that indicated that this site performed at least the minimum required amount of load check inspections of 10 per day, three times per week. See attached report.

3.) **Vehicle Traffic:** Records were provided prior to this inspection via email from RCDWR. During this month, the landfill did not exceed the vehicle traffic volume limit of 1,305 vehicles daily. See attached report.

4.) **Complaint Log:**

ODOR

**Disposal Facility (Site) Inspection Report (52)**  
**El Sobrante Landfill (33-AA-0217)**  
2/24/2026

-01/13/26 at 4:18 PM a complaint was called in to Richard Carpenter with WM. The complaint log on-site stated that a follow-up was conducted but did not specify the findings or actions taken in response to addressing the complaint. Ensure written records of complaints include the disposition and operator's actions taken to resolve all complaints.

Odor mitigations include dual static perimeter neutralizer mister lines, portable mister line, water truck mixed with an odor eliminator at the active working face (as needed) and a green waste static odor neutralizer mister line.

**5.) Special Occurrences:**

-On 01/06/26 at approximately 9:15AM, a leachate seep was observed at the same location of the seep that occurred on 12/16/25 east of Phase 8 LCRS and outside the subsurface elevated temperature and enhanced management areas.

-On 01/09/26 on SEM (Surface Emissions Monitoring) exceedance was noted at well EW2392 during an inspection with SCAQMD (South Coast Air Quality Management District).

-On 01/16/26 at approximately 4:17 PM a leachate seep was observed at the same area identified in the 12/25/25 leachate seep. The seep is located near Phase 9 LCRS.

-On 01/30/26 at approximately 10:38 AM, a leachate seep was identified near extraction gas well EW1557D within the subsurface elevated temperature (SET) area.

-Site visits were also documented in the special occurrences log from various regulatory agencies on 01/09/26, 01/13/26, 01/21/26, 01/22/26, and 01/29/26.

**6.) Employee Training:** Topics included: Emergency Response, Tipping Floor, Housekeeping, Treating Wood Waste, Slips Trips and Falls. Employee attendance logs for the training sessions were observed.

**7.) RDRS Records:** Ensure all future RDRS (Recycling and Disposal Reporting System) records, beginning with the 4<sup>th</sup> Quarter 2025 RDRS Quarterly Report, are submitted by the required deadlines and are made available to the LEA for review on-site during inspection. The 4<sup>th</sup> quarter submittal period for this site is 03/1-03/31.

**Overall Site Observations:**

Required signage was observed at the front entrance and scale house. The main entrance and scale house were observed to be well-maintained and mostly free of windblown litter. Flare 3 and 4 were both observed to be online. Flare 5 was installed but not yet in operation. Temporary leachate tanks were still present. Three gold tanks estimated to hold approximately 168,200 gallons of leachate each and seven double-walled gray tanks estimated to hold approximately 20,000 gallons of leachate each were present but not yet in use. Operators previously stated that the liquid treatment system was currently in a testing phase and the

# Disposal Facility (Site) Inspection Report (52)

El Sobrante Landfill (33-AA-0217)

2/24/2026

tested liquid continues to be hauled offsite. Multiple liquid waste trucks were observed on-site, reportedly to haul leachate. Currently, leachate is reportedly taken offsite to facilities in Mecca, California and Nevada.

At the green waste pad, the temperature of the green waste piles were taken and found to be 73.9-78.6F. Material on the green waste pad comes from WM route trucks collecting residential curbside green waste servicing Corona, the city of Riverside, and unincorporated areas of Riverside County. This area is designated for chipping and grinding, however, no chipping and grinding activities are being performed currently. No grinder was observed onsite. All green materials deposited on this pad are loaded into transfer trucks and sent out to Azusa Transfer Station for processing. Piles of different types of rock material were observed stockpiled behind the green waste pad. The mister system to control odors was operating in this area and at other portions of the landfill at the time of the inspection

The active face was inspected and all vehicles were directed to use a single point of entry and exit. The active face consisted of lifts 5 and 6 (upper lift). Landfill tipper machines, known as tippers, were directed to unload at the toe of lift 6, while commercial trucks and self-haul customers performing hand-unloads were directed to lift 5 to unload. Cones and traffic control attendants were present and directing customers on where to go to unload waste. Signs were present to direct traffic. Backup alarms and safety lights were observed in use on heavy equipment vehicles and loaders.

During this inspection, gas wells in Phases 3, 4, 8, 9, 10, and 11 were observed. The LEA utilized a FLIR (Forward Looking Infrared) camera used to detect heat in order to obtain approximate temperature readings of multiple wells. The following wells were measured: EW1554D at 163-168F (Photo Log Page 10), EW2386 at 174-180F (Page 13), EW2446D at 184-189F (Page 17), EW1557D at 163-166F (Page 20), EW2385 at approximately 148F (Page 22). Multiple wells visited were wells with temperatures that have been documented to exceed 170F (per the high temperature notifications discussed previously in the site maintenance violation section of this inspection report). Note: Several of these wells are located within closed areas of the landfill that contain an installed final cover. The final cover on any area of an active landfill shall be maintained to comply with the CIWMB criteria for closure and post-closure maintenance specified in 27 CCR section Division 2, Subdivision 1, Chapter 3, Subchapter 5. Specifically, the final cover shall function to protect public health and safety by controlling at a minimum, fires and odors [27 CCR 21140(a)], and the LEA may require modifications to the final cover to control fires and allow access to all areas for inspection and monitoring [27 CCR sections 21140 (c)(1) and (c)(3)]. In addition, any areas in which final cover is placed prior to the closure of the entire landfill, shall be maintained in accordance with the approved post-closure maintenance plan.

WM employees were observed wearing personal protective equipment (PPE) consisting of hard hats, safety vests, and what appeared to be steel-toed boots. The falconer was observed on-site at this inspection. The universal waste, scrap metal/appliances area, recycle pad, and tire storage containers located next to the green waste pad were observed to be well maintained and mostly free of windblown litter.

# Disposal Facility (Site) Inspection Report (52)

El Sobrante Landfill (33-AA-0217)

2/24/2026

Phase 9 “top deck” storage area, utilized for staging soil from recent spills/seeps, was visited. Recent rains caused a high volume of water accumulation throughout the landfill. Specifically, pooled water was observed in the following areas: along the berm at EW1557D built to catch rainwater in Phase 4 Stage 1 (Photo Log Page 19), well EW2095 located at the “top deck” storage area located approximately in Phase 9B/10 (Page 27), and along the road leading to the East side entrance of the active face (Page 35). During the inspection, storm water was actively being pumped and redirected. Follow-up photos were provided after the inspection to document water removal efforts (Page 28 & 36). Following the landfill inspection, off-site observations were conducted in the Spanish Hills, Dawson Canyon, and Terramor communities. No odors, windblown litter, or other nuisance conditions were detected in these areas. Monitoring of these locations will continue during future inspections.

If you have any questions regarding this inspection report, please contact the LEA at (951) 955-8980 or email [LEA@rivco.org](mailto:LEA@rivco.org).

## Attachments

El Sobrante Landfill - Load Checks  
El Sobrante Landfill - Photo Report  
El Sobrante Landfill - Tonnage

Disposal Facility (Site) Inspection Report (52)  
El Sobrante Landfill (33-AA-0217)  
3/2/2026

**Inspection Information**

**Inspected By:** Riverside County **Local Inspection ID:** PR0001436  
**Inspection Date:** 3/2/2026 **Time In:** 1:00 AM  
**Inspection Type:** Focused **Time Out:** 2:00 AM  
**Inspector:** Miranda Ramirez & Fritzy Devera **Inspection Duration:** 1 hour  
**Operator:** USA Waste of California, Inc.  
**Received By:**  
**Also Present (Name):**  
Eddie Botello

**Facility/Activity Information**

**Enforcement Agency:** County of Riverside **SWIS Number:** 33-AA-0217  
**Facility:** **El Sobrante Landfill**  
10910 Dawson Canyon Road  
Corona, CA 91719  
**Activity:** Solid Waste Landfill  
**Operational Status:** Active **Regulatory Status:** Permitted  
**Land Owners(s):**  
USA Waste of California, Inc.

*The above facility was inspected for compliance with applicable sections of Division 30 of the Public Resources Code (PRC) and Title 14 and Title 27, California Code of Regulations (CCR).*

**No Violations**

**Areas of Concern**

**27 CCR 20690 - Alternative Daily Cover**  
Per Title 27 CCR Section 20690 (a)(2)

Alternative daily cover alone, or in combination with compacted earthen material, shall be placed over the entire working face at the end of each operating day or at more frequent intervals to control vectors, fires, odors, blowing litter, and scavenging without presenting a threat to human health and the environment.

Observed areas throughout the working face to have exposed waste and tears with

# Disposal Facility (Site) Inspection Report (52)

El Sobrante Landfill (33-AA-0217)

3/2/2026

some areas of the tears exposing waste on top of the alternative daily cover. See photo report for more details. Properly repair the tears in the tarp and ensure that all waste is properly covered at the end of the operating day to prevent pest, odors, litter, scavenging, etc.

## Inspection Report Comments

The purpose of this visit was to conduct a focused cover inspection. F. Devera of this Department and Eddie Botello with El Sobrante Landfill were also present during this inspection.

The weather at the time of inspection was 60F mostly clear with 3 mph winds from the North-West.

Facility was observed to be utilizing processed C&D waste along with approximately 18 tarps as their alternative daily cover. Tarps were observed deployed over the working face of the landfill and in some areas, tears were observed. See area of concern and photo report for more details. WM employees were on-site preparing for daily landfill operations to begin.

No other areas of the landfill were inspected during this visit. Any outstanding issues, areas of concern, or violations from previous inspections will be addressed during the next routine monthly inspection.

If you have any questions regarding this inspection, please contact (951) 955-8980 or email [LEA@Rivco.org](mailto:LEA@Rivco.org).

## Attachments

El Sobrante - Cover Photo Report



# Disposal Facility (Site) Inspection Report (52)

El Sobrante Landfill (33-AA-0217)

3/24/2026

On 02/05/26 the LEA received a notification for a leachate spill that occurred near EW2469 on 02/04/26. The written report provided by the operator stated, "On February 4, 2026, at approximately 10:17 AM, a leachate spill occurred from a valve failure causing a spill near EW2469 at El Sobrante Landfill. Upon discovery, site personnel closed the valve to the pressure relief system, stopping the spill. Approximately 40 gallons of leachate traveled approximately 30 feet, impacting an estimated area of approximately 120 square feet. A small portion reached the adjacent bench road, but there was no surface pooling. The spill occurred outside of the enhanced monitoring area. No liquids entered the storm drains or migrated offsite. A soil sample was collected on February 6, 2026. The analytical results of the soil sampling will be submitted under a separate report. Upon discovery, site personnel immediately closed the pressure relief valve, stopping the spill. On February 5, 2026, the defective valve was replaced, and approximately 1 cubic yard of impacted soil was excavated and placed on plastic sheeting on the top deck (pending laboratory results). Clean cover soil (processed material meeting site specifications) was subsequently placed, compacted, and the area was regraded to restore site conditions. All repair and cleanup activities were completed on February 5, 2026. Site personnel will continue to monitor the area."

On 02/23/26 the LEA received a notification for a leachate spill that occurred on the same date at EW1554D. The written report provided by the operator stated, "On February 23, 2026, at approximately 6:50 AM, a leachate spill occurred due to a flange failure at EW1554D at the El Sobrante Landfill. Approximately 20 gallons of leachate were released within the subsurface elevated temperature (SET) area, impacting an estimated area of 20 feet by 40 feet. The release ceased once the flex hose was reconnected at approximately 8:45 AM. No liquids entered the storm drain system or migrated offsite, and no surface ponding was observed. Soil samples were collected on February 25, 2026. The analytical results will be submitted under a separate report. Upon further investigation, a blockage in the wellhead caused a buildup of pressure, which resulted in the flange failure and subsequent spill. On February 23, 2026, the wellhead at EW1554D was replaced, and all repairs were completed at approximately 9:15 AM. The impacted soil (approximately 10 cubic yard) was excavated and placed on plastic sheeting on the top deck (pending laboratory results). Clean cover soil (processed material meeting site specifications) was subsequently placed, compacted, and the area was regraded to restore site conditions. All cleanup activities were completed on February 24, 2026. Site personnel will continue to monitor the area."

On 02/27/26 the LEA received a notification for a smolder that was observed near gas well EW2583. The written notification provided by the operator stated, "On February 27, 2026, at approximately 12:46 PM, a minor smolder was observed in Phase 11B near gas well EW2583. The gas well EW2583 recorded a carbon monoxide (CO) level of 75 parts per million (ppm) today. The affected area was subsequently covered with soil, compacted, and regraded. Site personnel will continue to monitor the location to ensure no further issues arise."

# Disposal Facility (Site) Inspection Report (52)

El Sobrante Landfill (33-AA-0217)

3/24/2026

On 02/28/26 the LEA received a notification for a leachate spill that occurred on the same date east of the Phase 9 Leachate Collection and Removal System (LCRS). The written report provided by the operator stated, "On February 28, 2026, at approximately 7:25 AM, a minor leachate spill occurred east of the Phase 9 LCRS at the El Sobrante Landfill. The release occurred when an operator attempted to move a 2-inch HDPE pipe to perform work in the area, causing the 2-inch tee to break. The line was pinched off, stopping the leak immediately. An estimated 20 gallons of leachate were released, with a small portion entering the adjacent v-ditch. No liquids entered the storm drain systems or migrated offsite. This occurrence is not within the subsurface elevated temperature or enhanced management areas. Soil samples were collected on March 4, 2026. The analytical results will be submitted under a separate report. Site personnel pinched off the line, stopping the spill immediately. Approximately 1 cubic yard of impacted soil was excavated and placed on plastic sheeting on the top deck (pending laboratory results). Clean cover soil (processed material meeting site specifications) was subsequently placed, compacted, and the area was regraded to restore site conditions. All repair and cleanup activities were completed on February 28, 2026."

On 02/27/26 the LEA received a completed South Coast Air Quality Management District Form 500-N for the malfunction of extraction gas well EW1554D which occurred on 02/23/26 for approximately 2 hours due to a flange failure.

During this routine monthly inspection, several gas extraction wells in Phases 3, 4, 8, 9, and 11 were observed and are documented below and in the attached photo report.

Observed darkened flex hoses at the following wells:

- EW1795 (Page 8)
- EW2451D (deep) and EW2451S (shallow) (Page 13)
- EW2450D and EW2450S (Page 18)
- EW2446D and EW2446S (Page 26, Photo1)
- EW2385 (Page 30, Photo 1)
- EW2386 (Page 32)
- EW2445 (Page 34)
- EW1554D (Page 36, Photo 1)
- EW2444 (Page 38, Photo 1)

Disposal Facility (Site) Inspection Report (52)  
El Sobrante Landfill (33-AA-0217)  
3/24/2026

Observed a caving-in donut reducer at the following wells:

- EW1795 (Page 8)
- EW2451D (Page 13)
- EW2506 (Page 22, Photo 1)
- EW2385 (Page 30, Photo 1)
- EW1554D (Page 36, Photo 1)

Observed a dark liquid staining on the following wells:

- Casing of EW2451S (Page 13)
- EW2450D and EW2450S (Page 19, Photos 1 & 2)

Observed a dark liquid/residue on the following wells:

- Flange portion of EW2109 (Page 16, Photo 2)
- Liquid discharge line of EW2385 (Page 30, Photo 2)
- Flange of EW1554D (Page 36, Photo 2)
- Skirting of EW2444 (Page 38, Photo 2)

Observed dark stained soil on the ground in the following areas:

- Bench road in front of wells EW2450D and EW2450S (Page 20)
- In front of the liquid discharge line of EW2506 (Page 22, Photo 2)

Observed a deteriorated gasket on the following wells:

- EW2451D (deep) (Page 14)

Observed a gasket to be askew on the following wells:

- EW2446D (Page 26, Photo 2)

Observed the following well to be partially buried:

Disposal Facility (Site) Inspection Report (52)  
El Sobrante Landfill (33-AA-0217)  
3/24/2026

- EW2109 (Page 16, Photo1)

Based on the above observations and notifications, this site is not in a state of reasonable repair. The operator must continue to monitor all aspects of the disposal site and properly implement all necessary corrective measures to maintain the site in a state of reasonable repair. The operator submitted a Report of Facility Information (RFI) amendment on 12/12/25 to add a Site Maintenance Program (SMP) to the Joint Technical Document (JTD), detailing the proposed plan to address the Enhanced Management Area (EMA) and Subsurface Elevated Temperature (SET) area of the landfill. This RFI amendment was rejected on 01/09/26. The RFI resubmittal was received by the LEA on 02/13/26 and is currently under review.

**No Areas of Concern**

**Inspection Report Comments**

This is a monthly routine inspection conducted with Miranda Ramirez of the LEA, and Waste Management (WM) employees – Eddie Botello, Rafael Rosales, Jose Mendoza, and Dave Meyer.

This site is an active landfill which operates 24 hours per day, 6 days per week (Monday through Saturday; Closed Sunday).

Ambient weather at the time of this inspection was 73F and sunny with 3 mph winds.

The following records for the month of February 2026 were reviewed:

1.) **Tonnage:** Records were provided prior to this inspection via email from Riverside County Department of Waste Resources (RCDWR). These records indicated that this landfill did not exceed the weekly permitted limit of 70,000 tons or the daily permitted limit of 16,054 tons. See attached report.

2.) **Load Checks:** Summary reports were provided prior to this inspection via email from RCDWR that indicated that this site performed at least the minimum required amount of load check inspections of 10 per day, three times per week. See attached report.

3.) **Vehicle Traffic:** Records were provided prior to this inspection via email from RCDWR. During this month, the landfill did not exceed the vehicle traffic volume limit of 1,305 vehicles daily. See attached report.

4.) **Complaint Log:**

ODOR

-02/23/26 at 1:39PM, a complaint was called in to Richard Carpenter with WM regarding an

**Disposal Facility (Site) Inspection Report (52)**  
**El Sobrante Landfill (33-AA-0217)**  
3/24/2026

odor complaint in the Terramor Community. WM staff responded by conducting a community inspection. Disposition of complaint investigation by the operator stated that no discernible odors were detected during the time of inspection, and no unusual/odorous loads were disposed of at the landfill

-02/24/26 at 9:42AM, a complaint was texted to Richard Carpenter with WM regarding an odor complaint in the Terramor Community. WM staff responded by conducting a community inspection. Disposition of complaint investigation by the operator stated that no discernible odors were detected during the time of inspection, and no unusual/odorous loads were disposed of at the landfill

Odor mitigations include dual static perimeter neutralizer mister lines, portable mister line, water truck mixed with an odor eliminator at the active working face (as needed) and a green waste static odor neutralizer mister line.

#### TRAFFIC

On 02/05/26, 02/18/26, and 02/25/26 complaints regarding vehicle traffic were texted to and addressed by Richard Carpenter with WM.

#### 5.) **Special Occurrences:**

-On 02/04/26 at approximately 10:17AM, a leachate spill occurred from a valve failure causing a spill near EW2469.

-On 02/23/26 at approximately 6:50AM a leachate spill occurred due to a flange failure at EW1554D.

-On 2/27/26 at approximately 12:46PM, a smolder was observed near Phase 11B by gas well EW2583.

-On 2/28/26 at approximately 7:25AM, a leachate spill occurred East of Phase 9 LCRS.

-Site visits were also documented in the special occurrences log from various regulatory agencies on 02/18/26, 02/23/26, and 02/24/26.

6.) **Employee Training:** Topics included: Fire Extinguisher, ECAP: Nuisance Management, Illness Prevention Program, Pushing and Pulling, Pre/Post trip Inspection. Employee attendance logs for the training sessions were observed.

7.) **RDRS Records:** Ensure all future RDRS (Recycling and Disposal Reporting System) records, beginning with the 4<sup>th</sup> Quarter 2025 RDRS Quarterly Report, are submitted by the required deadlines and are made available to the LEA for review on-site during inspection. The 4<sup>th</sup> quarter submittal period for this site was 03/1-03/31 and was provided to the LEA via

Disposal Facility (Site) Inspection Report (52)  
El Sobrante Landfill (33-AA-0217)  
3/24/2026

email. The upcoming 1<sup>st</sup> Quarter RDRS report period for submittal is 6/1-6/30.

**Overall Site Observations:**

Required signage was observed at the front entrance and scale house. The main entrance and scale house were observed to be well-maintained and mostly free of windblown litter. Flare 3 and the newly installed Flare 5 were both observed to be online, while Flare 4 was observed to be offline. According to onsite personnel, the Gas Collection and Control Systems (GCCS) operates effectively without requiring all 3 flares to be online simultaneously. Temporary leachate tanks were still present. Three gold tanks estimated to hold approximately 168,200 gallons of leachate each and seven double-walled gray tanks estimated to hold approximately 20,000 gallons of leachate each were present but not yet in use. Operators previously stated that the liquid treatment system was currently in a testing phase and the tested liquid continues to be hauled offsite. Multiple liquid waste trucks were observed on-site, reportedly to haul leachate. Currently, leachate is reportedly taken offsite to facilities in Mecca, California and Nevada.

At the green waste pad, the temperature of the green waste piles were taken and found to be 80.6-81.7F. Material on the green waste pad comes from WM route trucks collecting residential curbside green waste servicing Corona, the city of Riverside, and unincorporated areas of Riverside County. This area is designated for chipping and grinding, however, no chipping and grinding activities are being performed currently. No grinder was observed onsite. All green materials deposited on this pad are loaded into transfer trucks and reportedly sent out to Azusa Transfer Station for processing. Piles of different types of rock material were observed stockpiled behind the green waste pad. The mister system to control odors was operating in this area and at other portions of the landfill at the time of the inspection.

The active face was inspected and vehicles were directed to use a single point of entry and exit. The active face consisted of lifts 5 and 6 (upper lift). Landfill tipper machines, known as tippers, were directed to unload at lift 6, while commercial trucks and self-haul customers performing hand-unloads were directed to lift 5 to unload. Cones and traffic control attendants were present and directing customers on where to go to unload waste. Signs were present to direct traffic. Backup alarms and safety lights were observed in use on heavy equipment vehicles and loaders.

This inspection included gas wells in Phases 3, 4, 8, 9, 11, and the site locations of special occurrences that occurred following the previous visit. The LEA utilized a FLIR (Forward Looking Infrared) camera used to detect heat in order to obtain approximate temperature readings of multiple wells. The following wells were measured and the pages mentioned refer to the attached photo report:

EW1795 at 180F (Page 9), EW2507 at 168F (Page 11), EW2451D at 146F (Page 15, Photo 1), EW2451S at 169F (Page 15, Photo 2), EW2109 at 165F (Page 17), EW2450D at 192F (Page 21), EW2506 at 152-155F (Page 23), EW2392 at 162F (Page 25), EW2446D at 189F (Page 27), EW1557 at 184F (Page 29), EW2385 at 185F (Page 31), EW2386 at 188-190F (Page 33), EW2445 at 184F (Page 35), EW1554D at 156F (Page 37), and EW2444 at 182F

# Disposal Facility (Site) Inspection Report (52)

El Sobrante Landfill (33-AA-0217)

3/24/2026

(Page 39). Multiple wells visited were wells with temperatures that have been documented to exceed 170F (per the high temperature notifications discussed previously in the site maintenance violation section of this inspection report). Note: Several of these wells are located within closed areas of the landfill that contain an installed final cover. The final cover on any area of an active landfill shall be maintained to comply with CalRecycle's (formerly the CIWMB) criteria for closure and post-closure maintenance specified in 27 CCR section Division 2, Subdivision 1, Chapter 3, Subchapter 5. Specifically, the final cover shall function to protect public health and safety by controlling at a minimum, fires and odors [27 CCR 21140(a)], and the LEA may require modifications to the final cover to control fires and allow access to all areas for inspection and monitoring [27 CCR sections 21140 (c)(1) and (c)(3)]. In addition, any areas in which final cover is placed prior to the closure of the entire landfill, shall be maintained in accordance with the approved post-closure maintenance plan.

WM employees were observed wearing personal protective equipment (PPE) consisting of hard hats, safety vests, and what appeared to be steel-toed boots. The falconer was observed on-site at this inspection.

The universal waste, scrap metal/appliances areas were relocated next to the maintenance shop. These sites, along with the recycle pad and tire storage, were observed to be well-maintained and free of windblown litter.

Phase 9 "top deck" storage area, utilized for staging soil from recent spills/seeps, was visited. Following the landfill inspection, off-site observations were conducted in the Spanish Hills, Dawson Canyon, and Terramor communities. Moderate odors were detected in the Dawson Canyon neighborhood following the on-site inspection. The LEA notified WM personnel and in response stated the operations team was informed and odor neutralizer was sprayed at the active face. No windblown litter or other nuisance conditions were detected in these areas. Monitoring of these locations will continue during future inspections.

If you have any questions regarding this inspection report, please contact the LEA at (951) 955-8980 or email [LEA@rivco.org](mailto:LEA@rivco.org).

## Attachments

El Sobrante Landfill - Load Checks  
El Sobrante Landfill - Photo Report  
El Sobrante Landfill - Tonnage